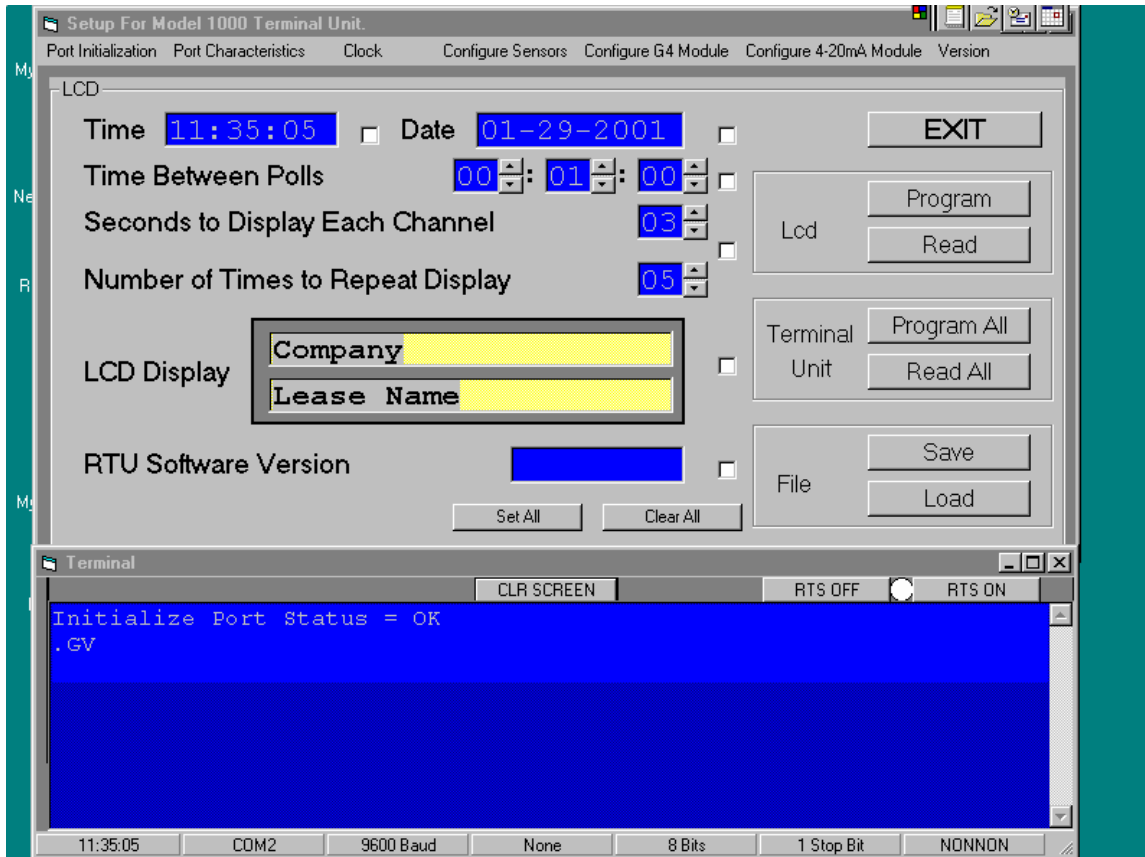


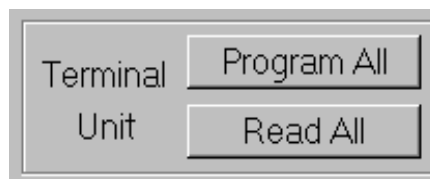
Model 1000 Terminal Unit Setup Utility (v1.05)

This program is intended to ease configuration of the Model 1000 Terminal Unit. The program works with software version 1.06 and later versions of the Model 1000 Terminal Unit software. Software requirements are Windows 95, 98 and NT. Display settings should be 800 x 600 or greater. Follow all on screen installation instructions completely. Upon execution of the program the following 2 windows will appear:



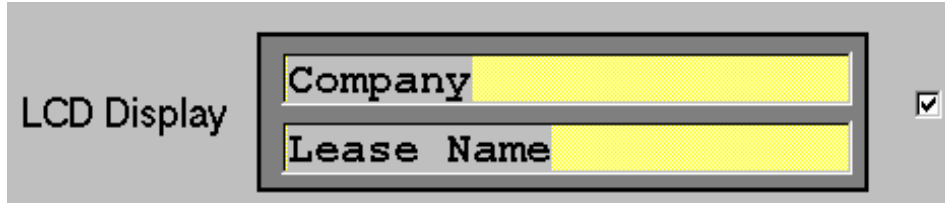
The top window is the main configuration screen. This is where the entire configuration of the Terminal Unit can be retrieved, programmed, saved or loaded from a file. The bottom window labeled Terminal is a versatile screen that echoes all commands to the Terminal Unit and all responses from the Terminal Unit. It can also be used to manually send commands to the Terminal Unit or to the Model 1000 Digital Level Sensors via the Terminal Unit. The bottom set of communications port status is indicative of the communications setup, with the exception of the communications port, which may vary from PC to PC.

Begin by powering up the Terminal Unit and waiting until the display shows the date and time. Connect a standard serial communications cable from the PC to the Terminal Unit communications port. Move the mouse to the following panel and click on Read All:

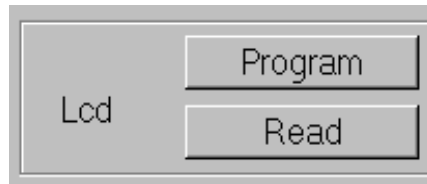


SIEMENS

The Terminal screen will begin to display the commands and responses until all the configuration data is retrieved and updated on the main screen. Begin to edit the main screen by highlighting the text to be changed and typing new text or clicking on the up or down arrows to change the numbers. Place a check in the white square adjacent to the item being changed. By selecting an item with a check the Program will either read or program only the selected field

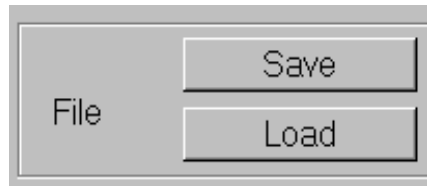


Assume the LCD Display is to be changed. Highlight the field to be changed, type in new text and select the check field. In the Lcd Panel click on Program and the item will be changed.

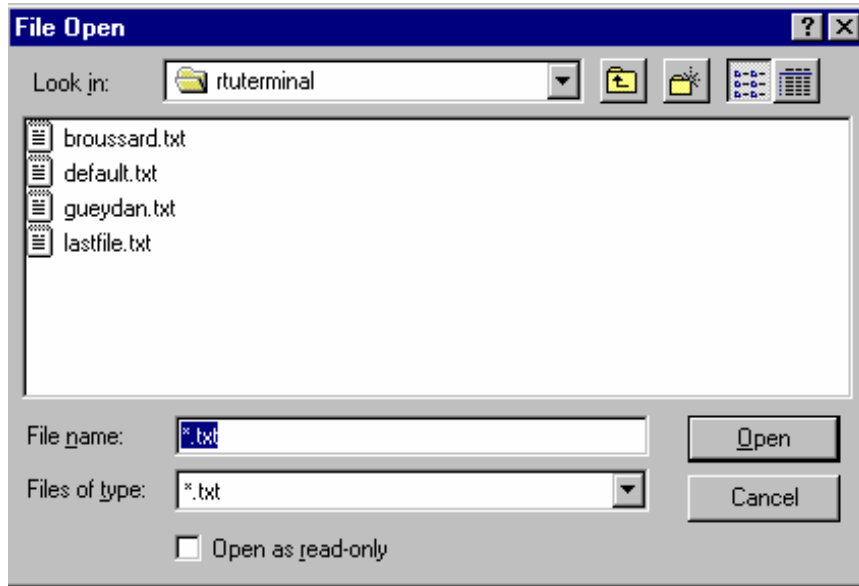


If you click Read with only the LCD display checked, only the LCD Display will be updated.

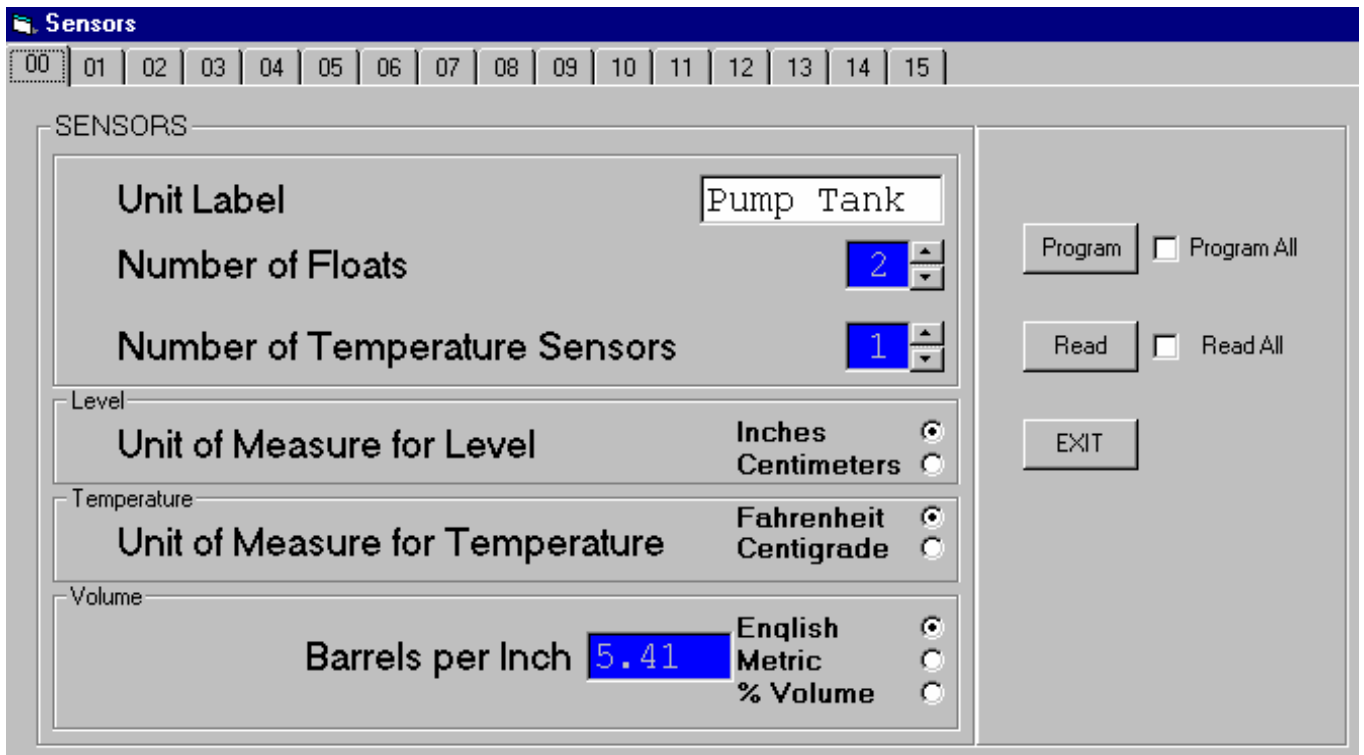
When all the configuration changes have been made, the file can be saved to disk for future reference. Simply



click on Save in the File panel and type in the file name and select Open. Follow the same procedures to Load a file.



To configure the sensors click on Configure Sensors at the top of the screen and the following window will appear:



Sensors are labeled U00 through U15. Follow the same procedures as for the main screen. Selecting Program or Read without placing a check in the square will result in only the data for the selected sensor to be updated or programmed.

G4 output modules can be programmed in the following screen selected from the top of the main menu following the same procedures:

G4 Modules

0 1 2 3 4 5 6 7 8 9

G4 MODULES

Monitor Unit# Disable All

Monitor Level Temperature Float # Program All

When Level is > = < Inches Read All

Turn G4 Module ON

When Level is > = < Inches

SIEMENS

Selecting 4-20mA from the main screen and following the procedures in the main setup, the user can program 4 to 20mA output modules. The setup screen is as follows:

4-20mA Modules

1 2 3 4 5 6 7 8

4-20mA MODULES

Monitor Unit # 0 Disable Disable All

Monitor Level Temperature Float # 1

4 miliamps equals 0 Inches

20 miliamps equals 191.5 Inches

Program Program All

Read Read All

EXIT

Monitor Unit # references the level sensor Unit number. In this case sensor unit # 00 is being selected for conversion to 4-20mA using the top float with a scale of 0" to 191.5". The bottom panel is for scaling the 4-20mA output. Selecting the Disable button will disable only the module being displayed. Checking Disable All will disable all 8 outputs. All changes take effect only after Program has been selected.

Contact Information:

Siemens Industrial Services
A business of Siemens Energy and Automation, Inc.

11831 Fairmont Parkway
La Porte, TX 77571

(281) 470-4000 tel
(481) 470-4020 fax
www.sea.siemens.com/DLS
Dale.Baker@siemens.com